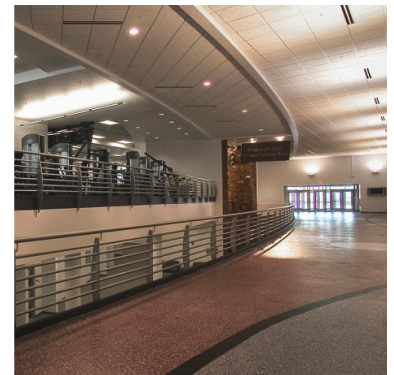
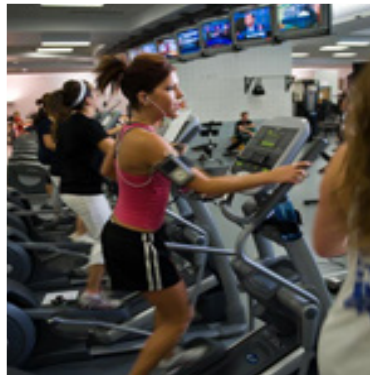


RELATED EXPERIENCE

St. Cloud State University Athletic Facility

St. Cloud, Minnesota

The SCSU project included a sports facility complex and recreation center that included fitness and aerobic spaces and a rock climbing wall. The project included the installation of a state-of-the-art synthetic turf with rubber infill and stadium seating. The field is enclosed in the winter with the 2nd largest inflatable dome in the state.



FIRM'S ROLE:

Prime Contractor

ELEMENTS OF WORK PERFORMED BY OUR FIRM:

Project management administrative and on-site management, concrete work, rough carpentry, finish carpentry for installation of cabinets, millwork, doors, door frames, hardware and miscellaneous accessories.

FINAL COST:

\$12,640,191

COMPLETION DATE:

September 2004

POINT OF CONTACT REFERENCE:

Ron Siebring

St. Cloud State University

720 4th Ave. S.

St. Cloud, MN 56301

320-255-3325

Mike Juhl

Hagemeister & Mack Architects

501 St. Germain Street West

St. Cloud, MN 56301

320-251-9155

W GOHMAN TEAM:

Denis Anderson

Mark Wolvert

Jim Engelmeyer